

# National Partnership to Improve Dementia Care in Nursing Homes: Late Adopter Data Report (April 2019)

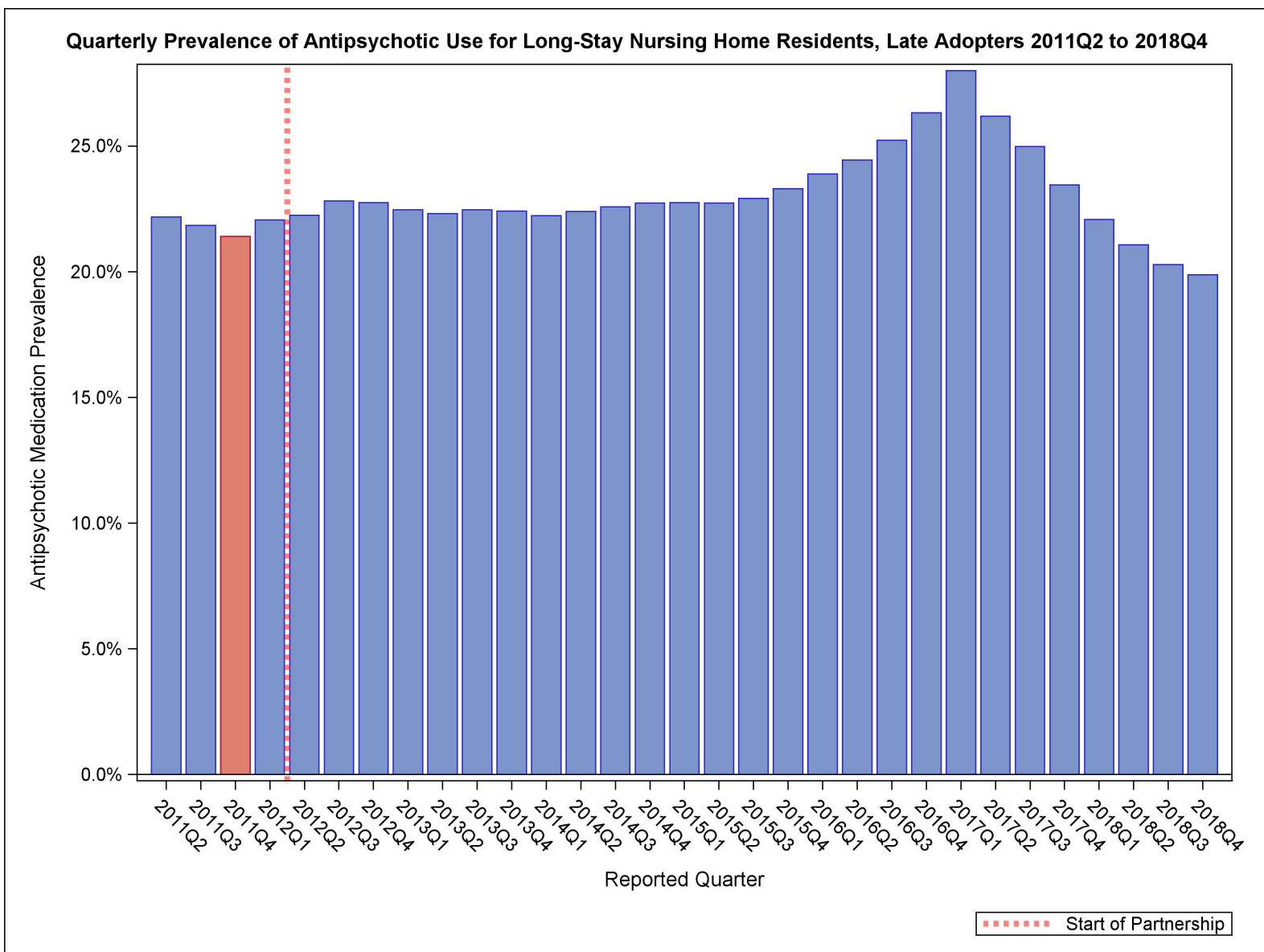
CMS announced that the National Partnership met its goal of reducing the national prevalence of antipsychotic medication use in long-stay nursing home residents by 30 percent by the end of 2016. It also announced a new goal of a 15 percent reduction in those homes with currently limited reduction rates.

Nursing homes with low rates of antipsychotic medication use are encouraged to continue their efforts and maintain their success, while those with high rates of use are to work to decrease antipsychotic medication use by 15 percent for long-stay residents by the end of 2019, using the prior baseline rate (2011Q4). These homes have been identified as late adopters.

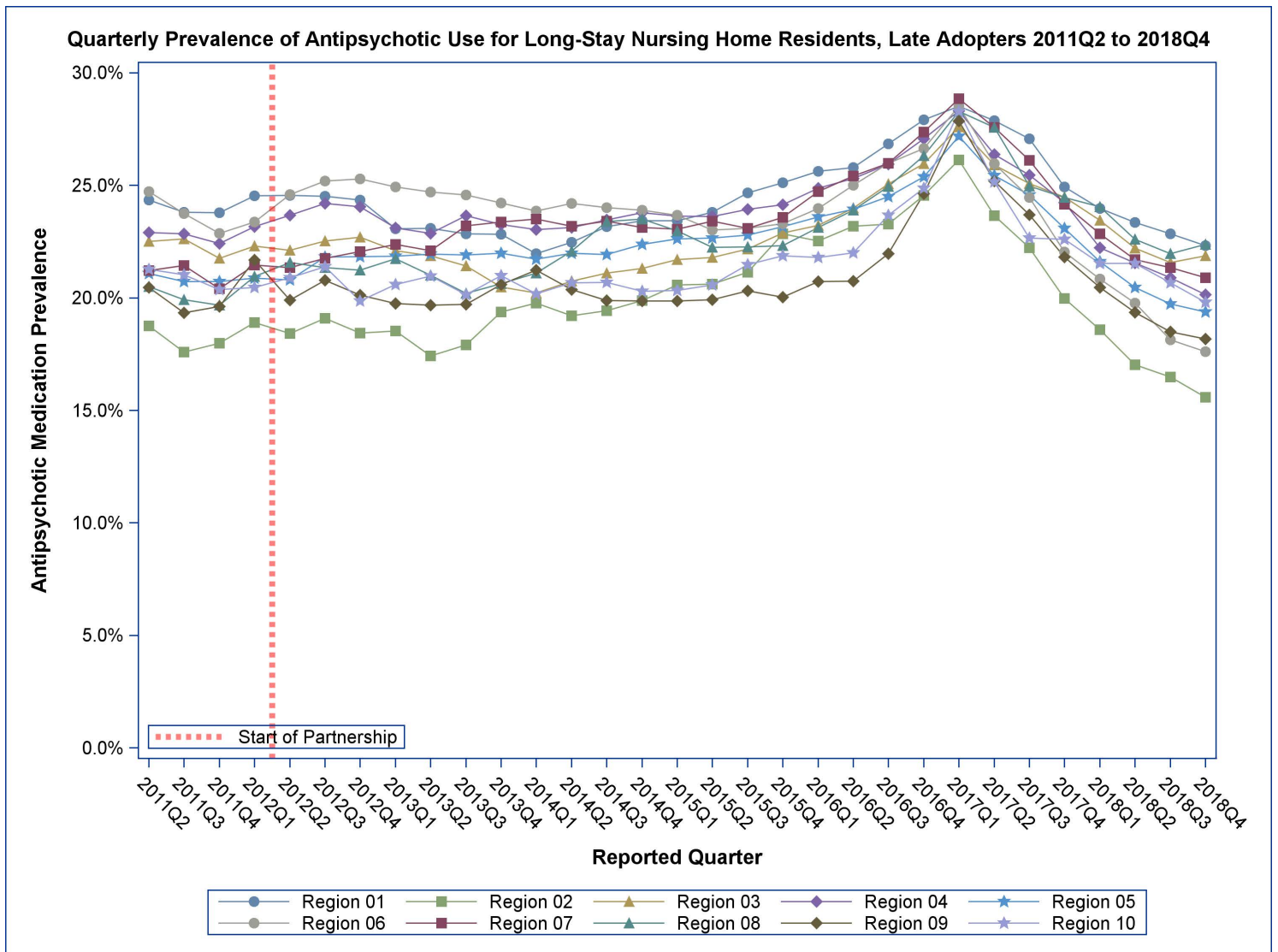
Nursing homes were identified as late adopters, based upon 2017Q1 data. These nursing homes continued to have a high rate of antipsychotic medication use, their percentage of change from 2011Q4 to 2017Q1 increased or decreased very little, and they remained above the national average in 2017Q1.

This quarterly data report is specific to the progress of the late adopters. In 2011Q4, 21.4 percent of long-stay nursing home residents, living in a nursing home identified as a late adopter, were receiving an antipsychotic medication; since then there has been a decrease of 7.1 percent to a national prevalence, among late adopters, of 19.9 percent in 2018Q4.

For more information on the National Partnership, please send correspondence to [dnh\\_behavioralhealth@cms.hhs.gov](mailto:dnh_behavioralhealth@cms.hhs.gov).



## Quarterly Prevalence of Antipsychotic Use for Long-Stay Residents, Late Adopters, CMS Regions



Region	Facility Count	2011Q4	2014Q3	2014Q4	2015Q1	2015Q2	2015Q3	2015Q4	2016Q1	2016Q2	2016Q3	2016Q4	2017Q1	2017Q2	2017Q3	2017Q4	2018Q1	2018Q2	2018Q3	2018Q4	Percentage point difference (2011Q4-2018Q4)	% Change
National	1508	21.4%	22.6%	22.7%	22.8%	22.7%	22.9%	23.3%	23.9%	24.4%	25.2%	26.3%	28.0%	26.2%	25.0%	23.5%	22.1%	21.1%	20.3%	19.9%	-1.53	-7.1%
Region 01	83	23.8%	23.2%	23.4%	23.4%	23.8%	24.7%	25.1%	25.6%	25.8%	26.8%	27.9%	28.5%	27.9%	27.1%	24.9%	24.0%	23.4%	22.8%	22.3%	-1.47	-6.2%
Region 02	41	18.0%	19.4%	19.9%	20.6%	20.6%	21.1%	22.9%	22.5%	23.2%	23.3%	24.6%	26.1%	23.6%	22.2%	20.0%	18.6%	17.0%	16.5%	15.6%	-2.39	-13.3%
Region 03	145	21.8%	21.1%	21.3%	21.7%	21.8%	22.2%	22.9%	23.2%	24.0%	25.1%	26.0%	27.6%	25.9%	25.1%	24.5%	23.4%	22.2%	21.6%	21.9%	0.10	0.5%
Region 04	290	22.4%	23.5%	23.8%	23.6%	23.6%	23.9%	24.1%	24.9%	25.3%	26.0%	27.1%	28.3%	26.4%	25.5%	24.2%	22.2%	21.6%	20.9%	20.2%	-2.26	-10.1%
Region 05	358	20.7%	21.9%	22.4%	22.6%	22.7%	22.8%	23.2%	23.6%	23.9%	24.5%	25.4%	27.2%	25.4%	24.6%	23.1%	21.6%	20.5%	19.7%	19.4%	-1.37	-6.6%
Region 06	218	22.9%	24.0%	23.9%	23.7%	23.0%	23.1%	23.3%	24.0%	25.0%	26.0%	26.6%	28.5%	26.0%	24.5%	22.0%	20.8%	19.8%	18.1%	17.6%	-5.25	-23.0%
Region 07	198	20.4%	23.4%	23.1%	23.0%	23.4%	23.1%	23.6%	24.7%	25.4%	26.0%	27.4%	28.8%	27.6%	26.1%	24.2%	22.8%	21.7%	21.4%	20.9%	0.49	2.4%
Region 08	66	19.7%	23.4%	23.5%	23.0%	22.2%	22.3%	22.3%	23.1%	23.9%	24.9%	26.3%	28.3%	27.6%	25.0%	24.5%	24.1%	22.6%	22.0%	22.4%	2.70	13.7%
Region 09	58	19.6%	19.9%	19.9%	19.9%	19.9%	20.3%	20.0%	20.7%	20.7%	22.0%	24.6%	27.9%	25.2%	23.7%	21.8%	20.5%	19.4%	18.5%	18.2%	-1.44	-7.4%
Region 10	51	20.4%	20.7%	20.3%	20.3%	20.6%	21.5%	21.9%	21.8%	22.0%	23.7%	24.9%	28.3%	25.2%	22.7%	22.6%	21.5%	21.5%	20.7%	19.8%	-0.57	-2.8%

## Quarterly Prevalence of Antipsychotic Use for Long-Stay Residents, Late Adopters, States

State	Facility Count	2011Q4	2014Q3	2014Q4	2015Q1	2015Q2	2015Q3	2015Q4	2016Q1	2016Q2	2016Q3	2016Q4	2017Q1	2017Q2	2017Q3	2017Q4	2018Q1	2018Q2	2018Q3	2018Q4	Rank in 2018Q4 (lower=better)	Percentage point difference (2011Q4-2018Q4)	% Change
ALABAMA	31	22.8%	23.4%	23.3%	23.5%	22.9%	22.8%	23.0%	24.9%	24.4%	25.4%	26.9%	28.0%	26.1%	25.9%	26.4%	24.8%	25.5%	26.0%	25.1%	47	2.35	10.3%
ARIZONA	9	20.0%	20.7%	21.2%	21.9%	24.2%	24.1%	22.3%	24.6%	25.0%	22.3%	27.0%	28.3%	26.6%	24.0%	23.9%	22.2%	18.2%	16.4%	16.5%	9	-3.48	-17.4%
ARKANSAS	18	22.5%	20.0%	19.0%	19.2%	19.4%	19.2%	19.8%	20.7%	21.4%	22.1%	23.5%	25.9%	23.8%	22.0%	20.1%	18.4%	17.9%	17.5%	17.3%	16	-5.13	-22.9%
CALIFORNIA	42	19.1%	18.8%	19.0%	18.8%	18.2%	18.9%	19.0%	19.4%	19.2%	21.3%	23.3%	27.0%	24.2%	22.4%	19.9%	19.0%	18.5%	17.6%	17.6%	17	-1.57	-8.2%
COLORADO	15	16.4%	22.5%	22.9%	22.7%	21.4%	23.0%	21.8%	23.7%	22.9%	24.3%	24.9%	26.1%	24.7%	24.7%	23.9%	24.6%	23.0%	23.8%	23.7%	41	7.27	44.3%
CONNECTICUT	17	24.4%	27.2%	27.2%	26.4%	25.7%	26.5%	27.3%	26.7%	26.6%	27.0%	26.7%	27.6%	27.2%	25.4%	22.0%	21.2%	21.5%	21.2%	22.0%	35	-2.42	-9.9%
DELAWARE	3	21.5%	19.1%	17.3%	17.3%	15.4%	13.4%	12.7%	15.5%	18.0%	22.8%	21.1%	24.0%	21.5%	19.8%	16.2%	14.2%	15.3%	15.3%	13.0%	2	-8.51	-39.6%
FLORIDA	75	21.7%	24.3%	24.2%	24.4%	24.5%	24.0%	23.8%	24.4%	24.8%	25.4%	26.5%	27.2%	25.4%	24.7%	23.5%	21.4%	21.1%	20.8%	20.0%	25	-1.73	-8.0%
GEORGIA	31	24.6%	22.8%	22.9%	24.0%	25.0%	25.4%	27.7%	27.5%	27.7%	28.5%	29.2%	31.1%	29.3%	27.9%	27.0%	25.2%	23.5%	22.5%	21.2%	28	-3.44	-14.0%
HAWAII	1	30.0%	0.0%	0.0%	0.0%	0.0%	0.0%	0.0%	0.0%	0.0%	0.0%	16.7%	33.3%	0.0%	0.0%	33.3%	0.0%	0.0%	0.0%	0.0%	1	-30.00	-100.0%
IDAHO	12	21.3%	23.4%	21.1%	19.7%	18.4%	16.6%	16.0%	15.9%	17.8%	20.3%	23.5%	27.1%	23.7%	21.2%	23.1%	22.5%	21.7%	19.2%	19.0%	22	-2.30	-10.8%
ILLINOIS	93	21.5%	23.6%	24.1%	24.3%	24.3%	23.7%	23.7%	24.4%	24.2%	24.9%	26.0%	28.3%	26.9%	26.3%	24.5%	23.9%	22.7%	21.7%	21.5%	32	-0.03	-0.1%
INDIANA	51	21.8%	22.4%	22.9%	22.4%	22.0%	22.1%	21.9%	23.4%	24.7%	25.3%	25.4%	27.4%	25.8%	24.4%	23.6%	22.4%	20.7%	19.8%	18.3%	19	-3.45	-15.9%
IOWA	52	19.6%	24.7%	24.2%	23.5%	23.9%	23.0%	24.0%	25.2%	25.5%	25.6%	26.3%	27.7%	26.8%	25.0%	23.2%	21.6%	21.2%	21.6%	22.4%	37	2.73	13.9%
KANSAS	59	20.0%	21.9%	22.3%	22.8%	23.3%	23.3%	23.2%	24.8%	25.6%	26.2%	27.2%	29.1%	28.2%	26.5%	24.1%	21.7%	19.6%	18.3%	17.1%	14	-2.93	-14.7%
KENTUCKY	51	22.4%	23.8%	24.3%	24.0%	23.3%	24.2%	25.1%	24.8%	25.6%	26.5%	27.4%	28.1%	27.1%	26.7%	24.9%	22.7%	22.5%	21.9%	22.1%	36	-0.22	-1.0%
LOUISIANA	35	22.6%	26.1%	26.8%	27.9%	24.8%	26.9%	24.2%	24.8%	27.4%	26.0%	27.4%	28.6%	26.1%	24.7%	21.4%	20.5%	20.7%	16.7%	15.0%	5	-7.63	-33.7%
MAINE	12	22.7%	21.3%	24.2%	23.0%	24.2%	24.9%	24.9%	25.1%	24.1%	27.9%	30.4%	31.3%	31.2%	31.0%	26.9%	25.7%	22.1%	21.2%	21.2%	29	-1.49	-6.6%
MARYLAND	16	21.0%	19.1%	19.8%	20.2%	18.6%	19.7%	19.9%	21.6%	23.1%	24.0%	24.5%	26.0%	24.6%	23.5%	22.2%	21.5%	20.6%	18.6%	18.9%	21	-2.08	-9.9%
MASSACHUSETTS	30	25.3%	23.4%	22.6%	23.7%	24.7%	25.8%	25.4%	26.1%	26.2%	27.3%	28.7%	28.9%	27.9%	27.1%	26.7%	25.7%	25.5%	25.4%	24.3%	44	-1.05	-4.2%
MICHIGAN	44	19.6%	18.9%	19.2%	20.1%	20.0%	21.6%	22.0%	21.7%	22.0%	22.9%	23.6%	26.6%	24.3%	24.3%	22.5%	21.6%	20.9%	20.0%	19.3%	23	-0.32	-1.6%
MINNESOTA	34	18.4%	18.3%	17.6%	18.0%	17.8%	18.1%	19.9%	20.5%	20.7%	21.8%	23.1%	25.2%	23.2%	22.1%	21.4%	17.8%	16.6%	16.9%	16.9%	12	-1.46	-8.0%
MISSISSIPPI	25	25.8%	24.2%	25.8%	25.5%	24.8%	25.8%	24.8%	26.5%	28.3%	28.7%	29.4%	30.9%	28.4%	27.4%	27.5%	26.4%	23.7%	22.6%	21.5%	30	-4.35	-16.9%
MISSOURI	52	21.0%	22.1%	21.1%	21.1%	21.8%	21.6%	21.9%	23.1%	24.4%	25.2%	27.6%	28.8%	27.9%	26.8%	23.8%	23.7%	22.5%	22.4%	21.5%	31	0.53	2.5%
MONTANA	5	25.2%	26.8%	23.2%	21.7%	19.7%	21.0%	23.8%	22.7%	23.8%	24.5%	26.5%	30.0%	27.2%	26.1%	29.2%	28.2%	24.3%	26.0%	25.0%	46	-0.18	-0.7%
NEBRASKA	35	21.4%	25.9%	25.9%	25.5%	25.2%	25.2%	26.1%	26.2%	26.6%	27.3%	28.9%	30.1%	27.2%	26.0%	26.3%	25.5%	24.8%	24.4%	24.1%	43	2.64	12.3%
NEVADA	6	20.6%	29.2%	27.5%	27.7%	28.4%	28.1%	27.3%	27.5%	28.7%	29.8%	31.6%	32.3%	34.4%	36.3%	30.5%	31.4%	30.1%	31.1%	27.7%	49	7.07	34.3%
NEW HAMPSHIRE	10	21.1%	22.4%	21.9%	20.7%	21.0%	21.9%	24.7%	23.8%	25.2%	25.8%	25.7%	26.5%	24.1%	23.6%	20.9%	19.6%	22.0%	20.9%	19.8%	24	-1.29	-6.1%
NEW JERSEY	13	16.8%	18.0%	18.8%	19.4%	19.0%	19.9%	23.0%	21.4%	23.1%	22.3%	22.2%	24.6%	22.3%	19.9%	20.3%	18.7%	17.6%	18.4%	16.2%	8	-0.53	-3.2%
NEW MEXICO	11	20.5%	17.6%	16.9%	16.9%	19.1%	20.5%	22.6%	20.8%	21.0%	23.6%	25.9%	27.1%	26.2%	24.3%	23.0%	21.7%	22.6%	22.6%	20.7%	27	0.22	1.1%
NEW YORK	28	18.6%	20.1%	20.4%	21.1%	21.4%	21.7%	22.8%	23.0%	23.2%	23.7%	25.7%	26.8%	24.3%	23.2%	19.8%	18.5%	16.7%	15.6%	15.3%	6	-3.26	-17.5%
NORTH CAROLINA	31	20.6%	21.0%	19.9%	20.1%	20.2%	21.4%	21.8%	22.1%	22.8%	24.3%	24.4%	25.5%	24.0%	21.9%	20.6%	17.4%	16.5%	15.9%	14.9%	4	-5.72	-27.8%
NORTH DAKOTA	11	16.6%	17.5%	19.2%	17.3%	19.6%	21.0%	20.4%	21.9%	23.2%	23.3%	26.1%	26.9%	28.3%	27.8%	27.7%	27.6%	27.4%	26.1%	27.1%	48	10.57	63.8%
OHIO	106	21.6%	23.7%	24.3%	24.3%	24.8%	24.9%	25.4%	25.4%	25.5%	25.7%	26.6%	27.5%	25.6%	24.6%	22.7%	20.7%	19.6%	18.8%	18.5%	20	-3.06	-14.1%
OKLAHOMA	50	24.4%	22.0%	22.3%	22.5%	22.2%	23.0%	23.6%	25.6%	27.2%	29.6%	29.4%	32.1%	30.4%	29.2%	28.0%	27.6%	26.1%	24.7%	25.0%	45	0.55	2.3%
OREGON	14	17.7%	18.3%	17.8%	18.6%	21.1%	24.6%	24.1%	24.7%	23.0%	22.7%	24.3%	26.6%	21.7%	19.8%	19.1%	18.2%	18.9%	18.3%	17.0%	13	-0.78	-4.4%
PENNSYLVANIA	74	21.2%	20.7%	20.7%	21.1%	21.1%	21.5%	22.0%	22.2%	23.2%	23.9%	24.7%	26.8%	24.9%	24.2%	23.8%	23.3%	22.1%	20.9%	21.6%	33	0.47	2.2%
RHODE ISLAND	8	20.7%	17.8%	18.8%	18.6%	17.7%	18.3%	20.1%	22.4%	23.5%	22.9%	25.8%	25.8%	24.3%	24.0%	21.6%	21.3%	20.1%	21.7%	23.0%	39	2.25	10.9%
SOUTH CAROLINA	19	17.1%	20.4%	21.9%	20.1%	22.0%	21.1%	21.3%	22.7%	20.5%	20.3%	24.8%	28.9%	24.8%	24.4%	20.3%	18.7%	17.9%	16.7%	17.2%	15	0.11	0.6%
SOUTH DAKOTA	20	21.3%	25.6%	26.2%	25.4%	25.4%	24.5%	24.6%	24.3%	24.5%	26.2%	27.9%	30.0%	28.7%	24.8%	25.2%	22.9%	22.9%	22.1%	22.7%	38	1.45	6.8%
TENNESSEE	27	24.2%	25.8%	27.0%	25.5%	24.9%	25.9%	24.7%	26.8%	28.0%	27.3%	28.3%	29.3%	26.7%	24.9%	23.4%	21.5%	20.5%	18.5%	16.9%	11	-7.33	-30.2%
TEXAS	104	22.5%	25.6%	25.3%	24.3%	23.8%	22.8%	23.5%	23.8%	24.3%	25.2%	25.7%	27.4%	24.1%	22.7%	19.6%	18.0%	16.4%	15.2%	14.7%	3	-7.79	-34.6%
UTAH	11	22.3%	25.7%	25.4%	26.9%	22.8%	19.9%	20.8%	23.6%	26.9%	27.2%	27.6%	31.2%	29.1%	22.8%	18.2%	20.7%	15.2%	14.8%	15.9%	7	-6.33	-28.4%
VERMONT	6	25.1%	23.0%	24.1%	25.8%	26.0%	26.8%	25.5%	28.4%	29.2%	29.0%	28.9%	30.3%	34.2%	32.8%	30.7%	29.5%	26.4%	21.9%	18.3%	18	-6.84	-27.2%
VIRGINIA	37	23.5%	24.4%	24.4%	24.7%	25.9%	25.5%	27.1%	26.9%	26.9%	27.6%	29.0%	30.1%	28.9%	28.0%	27.2%	25.8%	23.9%	24.2%	23.7%	42	0.20	0.8%
WASHINGTON	25	21.4%	20.7%	21.3%	21.6%	21.3%	22.1%	23.5%	23.0%	23.5%	25.9%	25.9%	29.8%	27.8%	25.0%	24.4%	23.0%	23.1%	22.9%	21.8%	34	0.42	1.9%
WEST VIRGINIA	15	21.2%	17.6%	19.2%	19.9%	20.0%	21.9%	21.9%	22.6%	23.0%	26.2%	27.0%	27.6%	25.7%	24.7%	25.2%	22.3%	21.4%	22.8%	23.3%	40	2.08	9.8%
WISCONSIN	30	17.8%	18.7%	19.5%	20.8%	20.7%	20.6%	21.1%	21.5%	22.6%	23.0%	24.4%	25.1%	23.8%	22.6%	22.0%	20.7%	19.9%	19.8%	20.5%	26	2.71	15.2%
WYOMING	4	18.2%	22.0%	19.1%	18.2%	18.2%	19.6%	20.2%	17.9%	18.3%	20.1%	20.7%	21.5%	27.3%	23.3%	25.5%	22.3%	24.6%	18.1%	16.8%	10	-1.41	-7.8%